

**DRENAJ KANALI
BİR YÖNE EĞİMLİ
ALTTAN ÇIKIŞLI 210 mm**

**DRAINAGE CHANNEL
CORNER SLOPE
BOTTOM OUTLET 210 mm**

Seri:
Endüstriyel Mutfak Serisi

Model:

KAC-29	(210 x 915 x 160 mm)
KAC-211	(210 x 1176 x 160 mm)
KAC-213	(210 x 1357 x 160 mm)
KAC-216	(210 x 1618 x 160 mm)
KAC-218	(210 x 1798 x 160 mm)
KAC-220	(210 x 2061 x 160 mm)
KAC-222	(210 x 2241 x 160 mm)
KAC-225	(210 x 2502 x 160 mm)

Seri:
Industrial Kitchen Series

Model:

KAC-29	(210 x 915 x 160 mm)
KAC-211	(210 x 1176 x 160 mm)
KAC-213	(210 x 1357 x 160 mm)
KAC-216	(210 x 1618 x 160 mm)
KAC-218	(210 x 1798 x 160 mm)
KAC-220	(210 x 2061 x 160 mm)
KAC-222	(210 x 2241 x 160 mm)
KAC-225	(210 x 2502 x 160 mm)

Çıkış Ölçüsü:
Ekli tablodan tercih edilecektir.

Tip:
Kademeli tava, kenardan alttan çıkışlı tek yöne eğimli, sifonlu, membran izolasyona uyumlu flanşlı, ankraj ve yükseklik ayar parçaları havi

Koku Tutma Suyu Derinliği:
40,00 mm

Üst Izgara Tipi:
Standart üründe üst ızgara Petek tipi olarak düzenlenmiştir.
(Talep edilirse ekli üst ızgara türleri düzenlenebilir.)

Malzeme:
Standart uygulama komple AISI 304 kalite paslanmaz çelikten imal edilmektedir.
(Talep edilmesi halinde AISI 316 kalite paslanmaz çelikten imal edilebilmektedir.)

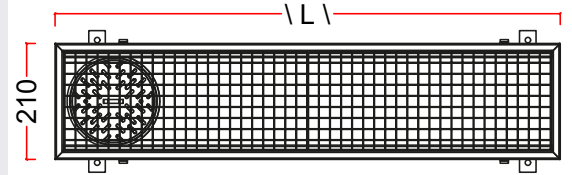
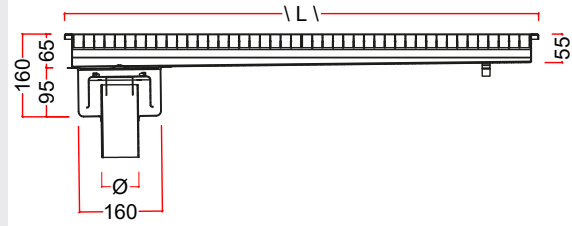
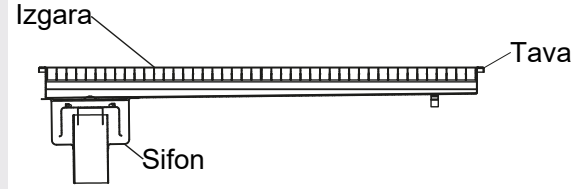
Outlet Size:
Preferred from the attached table.

Type:
Gradual gully, from the edge bottom outlet, corner slope, siphon, membrane isolation compatible flange, including anchoring and height adjustment parts

Odor Hold Water Depth:
40,00 mm

Upper Grate Type:
In the standard product, the upper grate is arranged as a reinforced honeycomb type.
(Attached top grate types can be edited if requested.)

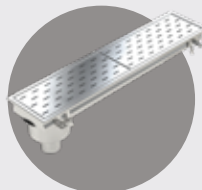
Material:
Standard application is completely AISI 304 quality stainless steel.
(It can be manufactured from AISI 316 quality stainless steel upon request.)



ÇIKIŞ ÖLÇÜSÜ/ OUTLET SIZE **IZGARA ALTERNATİFLERİ / GRATE ALTERNATIVES**

DN50	PVC	Ø50
DN50	PİK	Ø58
DN70	PVC	Ø75
DN70	PİK	Ø78
DN75	PİK	Ø83

**ASİMETRİK IZGARA
ASYMMETRIC GRATE**



**SİMETRİK IZGARA
SYMMETRICAL GRATE**

