

**DRENAJ KANALI
ORTAYA EĞİMLİ
YATAY ÇIKIŞLI 210 mm**

**DRAINAGE CHANNEL
CORNER SLOPE
HORIZONTAL OUTLET 210 mm**

Seri:
Endüstriyel Mutfak Serisi

Model:
DOYC-29 (210 x 915 x 180/200 mm)
DOYC-211 (210 x 1176 x 180/200 mm)
DOYC-213 (210 x 1357 x 180/200 mm)
DOYC-216 (210 x 1618 x 180/200 mm)
DOYC-218 (210 x 1798 x 180/200 mm)
DOYC-220 (210 x 2061 x 180/200 mm)
DOYC-222 (210 x 2241 x 180/200 mm)
DOYC-225 (210 x 2502 x 180/200 mm)

Çıkış Ölçüsü:

Ekli tablodan tercih edilecektir.

Tip:

Kademeli tava, ortadan yatay çıkışlı ortaya eğimli sifonlu, membran izolasyona uyumlu flanşlı, ankraj ve yükseklik ayar parçaları havi

Koku Tutma Suyu Derinliği:

40,00 mm

Üst Izgara Tipi:

Standart üründe üst izgara Petek tipi olarak düzenlenmiştir. (Talep edilirse ekli üst izgara türleri düzenlenebilir.)

Malzeme:

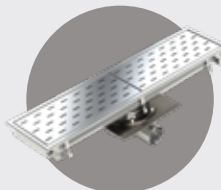
Standart uygulama komple AISI 304 kalite paslanmaz çelikten imal edilmektedir.

(Talep edilmesi halinde AISI 316 kalite paslanmaz çelikten imal edilebilmektedir.)

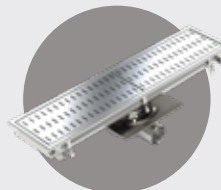
ÇIKIŞ ÖLÇÜSÜ/ OUTLET SIZE IZGARA ALTERNATİFLERİ / GRATE ALTERNATIVES

DN50	PVC	Ø50
DN50	PİK	Ø58
DN70	PVC	Ø75
DN70	PİK	Ø78
DN75	PİK	Ø83

**ASİMETRİK IZGARA
ASYMMETRIC GRATE**



**SİMETRİK IZGARA
SYMMETRICAL GRATE**



Seri:
Industrial Kitchen Series

Model:

DOYC-29 (210 x 915 x 180/200 mm)
DOYC-211 (210 x 1176 x 180/200 mm)
DOYC-213 (210 x 1357 x 180/200 mm)
DOYC-216 (210 x 1618 x 180/200 mm)
DOYC-218 (210 x 1798 x 180/200 mm)
DOYC-220 (210 x 2061 x 180/200 mm)
DOYC-222 (210 x 2241 x 180/200 mm)
DOYC-225 (210 x 2502 x 180/200 mm)

Outlet Size:

Preferred from the attached table.

Type:

Stepped tray, with horizontal outlet in the middle and inclined siphon in the middle, membrane insulation compatible flange, anchorage and height adjustment parts

Odor Hold Water Depth:

40,00 mm

Upper Grate Type:

In the standard product, the upper grate is arranged as a reinforced honeycomb type.

(Attached top grate types can be edited if requested.)

Material:

Standard application is completely AISI 304 quality stainless steel.

(It can be manufactured from AISI 316 quality stainless steel upon request.)

