



**DRENAJ KANALI
ORTAYA EĞİMLİ
YATAY ÇIKIŞLI 300 mm**

**DRAINAGE CHANNEL
CORNER SLOPE
HORIZONTAL OUTLET 300 mm**

Seri:
Endüstriyel Mutfak Serisi

Model:

OYC-39	(300 x 921 x 145 mm)
OYC-311	(300 x 1183 x 145 mm)
OYC-313	(300 x 1364 x 145 mm)
OYC-316	(300 x 1625 x 145 mm)
OYC-318	(300 x 1805 x 145 mm)
OYC-320	(300 x 2068 x 145 mm)
OYC-322	(300 x 2248 x 145 mm)
OYC-325	(300 x 2510 x 145 mm)

Çıkış Ölçüsü:
Ekli tablodan tercih edilecektir.

Tip:
Kademeli tava, ortadan yatay çıkışlı ortaya eğimli, sifonlu, membran izolasyona uyumlu flanşlı, ankraj ve yükseklik ayar

Koku Tutma Suyu Derinliği:
40,00 mm

Üst Izgara Tipi:
Standart üründe üst izgara Petek tipi olarak düzenlenmiştir.
(Talep edilirse ekli üst izgara türleri düzenlenebilir.)

Malzeme:
Standart uygulama komple AISI 304 kalite paslanmaz çelikten imal edilmektedir.
(Talep edilmesi halinde AISI 316 kalite paslanmaz çelikten imal edilebilmektedir.)

Seri:
Industrial Kitchen Series

Model:

OYC-39	(300 x 921 x 145 mm)
OYC-311	(300 x 1183 x 145 mm)
OYC-313	(300 x 1364 x 145 mm)
OYC-316	(300 x 1625 x 145 mm)
OYC-318	(300 x 1805 x 145 mm)
OYC-320	(300 x 2068 x 145 mm)
OYC-322	(300 x 2248 x 145 mm)
OYC-325	(300 x 2510 x 145 mm)

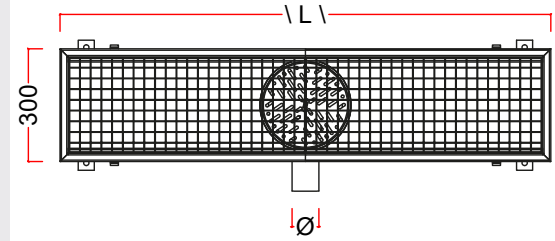
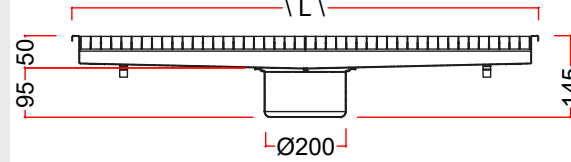
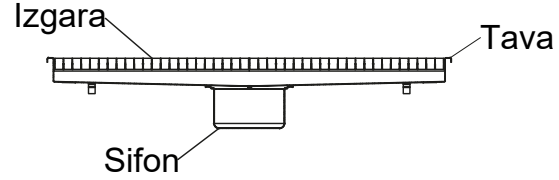
Outlet Size:
Preferred from the attached table.

Type:
Gradual gully, canter horizontal outlet, middle slope, siphon, membrane isolation compatible flange, including anchoring and height adjustment parts

Odor Hold Water Depth:
40,00 mm

Upper Grate Type:
In the standard product, the upper grate is arranged as a reinforced honeycomb type.
(Attached top grate types can be edited if requested.)

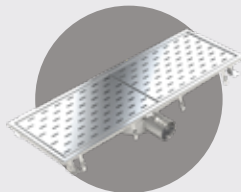
Material:
Standard application is completely AISI 304 quality stainless steel.
(It can be manufactured from AISI 316 quality stainless steel upon request.)



ÇIKIŞ ÖLÇÜSÜ/ OUTLET SIZE IZGARA ALTERNATİFLERİ / GRATE ALTERNATIVES

DN50	PVC	Ø50
DN50	PİK	Ø58
DN70	PVC	Ø75
DN70	PİK	Ø78
DN75	PİK	Ø83

**ASİMETRİK IZGARA
ASYMMETRIC GRATE**



**SİMETRİK IZGARA
SYMMETRICAL GRATE**

